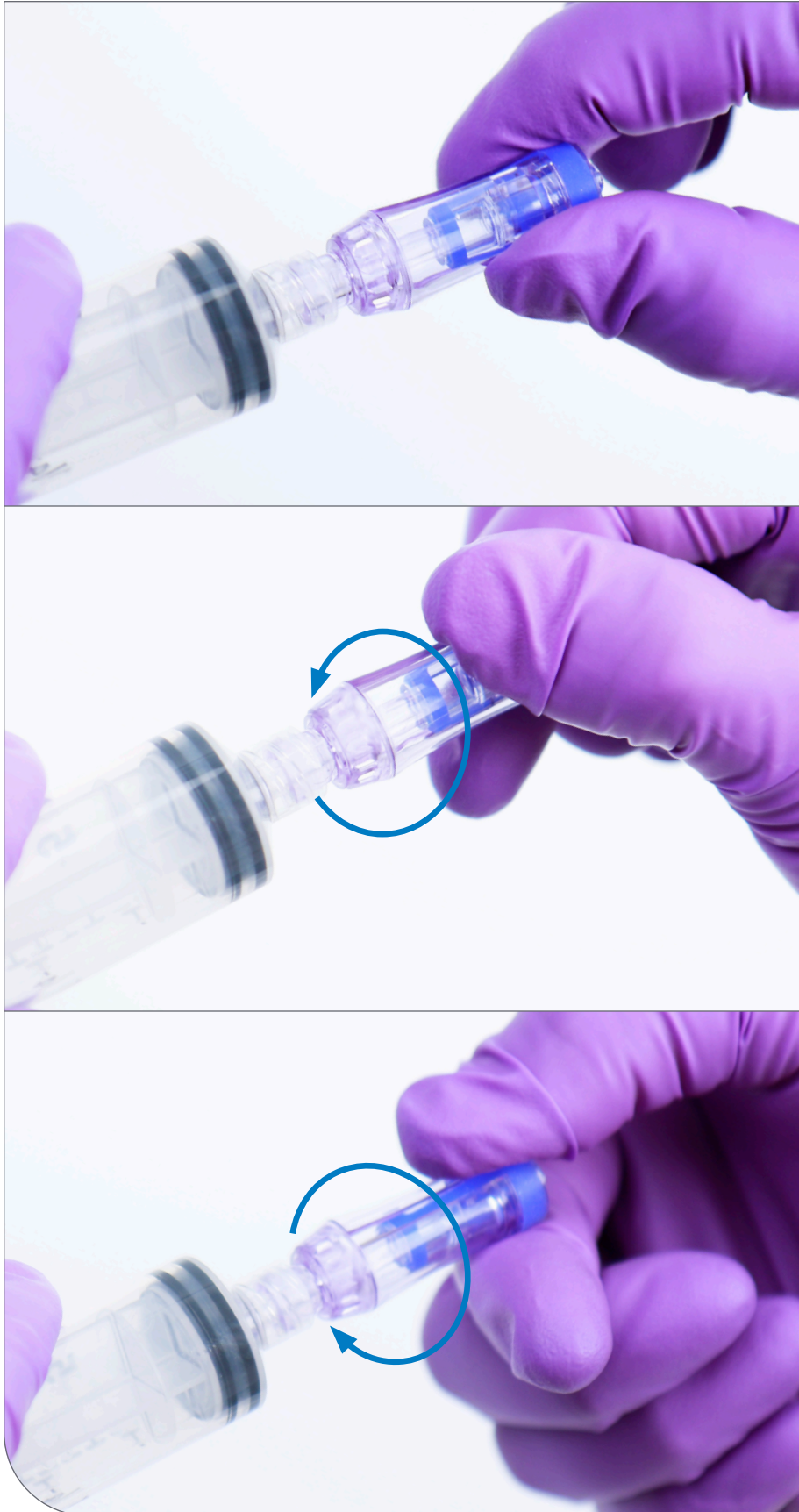




Spinning Spiros™ Adapter (CH2000S) / Spiros Adapter (CH2000)

Attaching a Spiros Adapter to empty syringe.



1. To connect a Spiros Adapter with a syringe

- › Attach a Spinning Spiros adapter to a syringe, push and twist Spinning Spiros female luer straight onto syringe until a click is heard and it begins to rotate freely. The Spinning Spiros adapter is now permanently attached to the syringe.
- › **Note:** Do not forcibly push a Spiros adapter onto a syringe and avoid bending forces at the connection as this may damage the syringe threads and cause an improper connection.