



68.2

Transpac™ IT

Integrated Pressure Transducer

Fully integrated pressure transducer combining a zeroing stopcock and combo flushing mechanism in an all-in-one, easy-to-use device

icumedical
human connections

See how you can get the reliable blood pressure measurements you need to manage your critical patients with one easy-to-use device

Having access to dependable pressure transducers in the OR and ICU is critical. That's why we're offering the Transpac IT fully integrated pressure transducer, combining the stopcock and flushing mechanism in one easy-to-use device.

With its reduced fluid path, clear visibility, and integrated design, Transpac IT is the clear choice to manage your critical patients

- › Identify air bubbles that may impede transducer performance with clear fluid pathway
- › Minimise the risk of transducer disconnections and air ingress with integrated design
- › Compatible with most currently available patient monitoring systems
- › Compatible with all existing Transpac IV accessories

Enhance patient safety and clinical efficiency with full visibility

Designed to enhance patient safety and improve ease of use, you'll find Transpac IT has fewer connections, fewer parts, and gives you more confidence and more convenience in one device.

Angled Connection

Permits easy access to zeroing stopcock

Clear Fluid Pathway

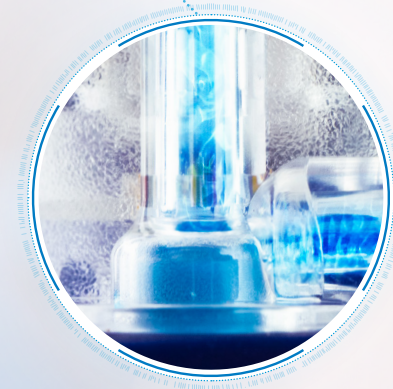
Allows for easy identification of air bubbles

Combo Flush Mechanism

Accommodates clinical preference and provides ease of use with either squeezing flush or pulling tab

Reduced Fluid Pathway

Requires less priming volume, creating less space for air bubbles and transducer interference

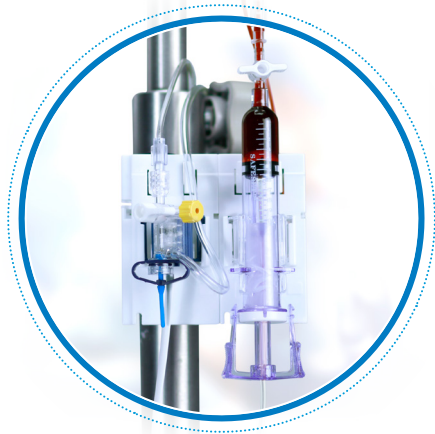


Transpac IT's integrated design helps minimise the risk of transducer disconnections and ingress of air into the system.



Get easy access to pressure monitoring where and how you need it

With its integrated design and clear fluid pathway, Transpac IT can help you enhance patient safety with increased visibility and fewer opportunities for disconnections. Available in multiple configurations, the Transpac IT is a convenient tool to help you manage your critical patients.



Safeset™
Blood Sampling System

Available with SafeSet, a closed, needlefree in-line blood sampling system that helps reduce blood waste



Specialty
Configurations

Available in adult, neonatal, and paediatric monitoring kits



Colour-Coded
Components

Colour-coded single, double, and triple pressure monitoring kits are designed to enhance patient safety and help reduce line confusion

Transpac IT fulfills the certification requirements under the following global standards:

- › IEC System of Conformity Assessment Schemes for Electrotechnical Equipment and Components (IEC), 60601-2-34 (Third Edition): 2011
- › American National Standards/Association for the Advancement of Medical Instrumentation, “Blood Pressure Transducers”, ANSI/AAMI BP22-1994

To learn more about Transpac IT,
please visit www.icumed.com

icumedical
human connections